

Budgie

Lightweight cart



Ergonomic

Simple lightweight design for easy to use



Smooth and easy to clean surfaces

Quick and easy to clean



Multi-purpose

Change to (Choice of mounting solutions)



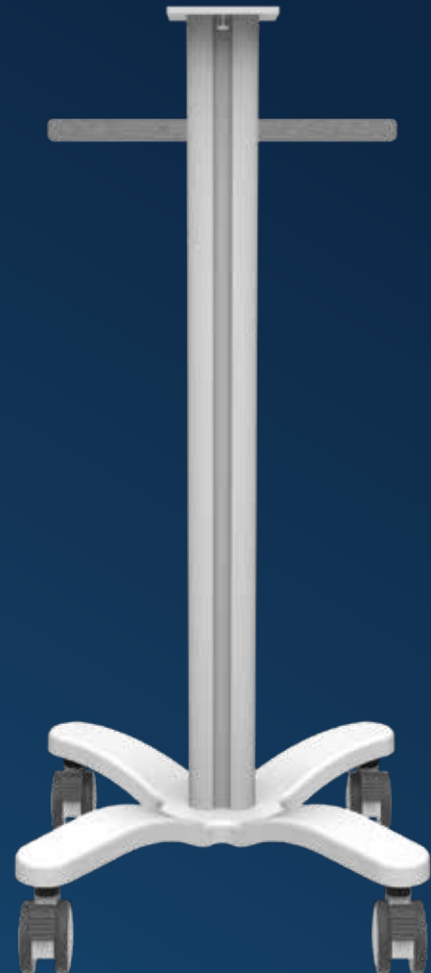
Durable

Lifetime Warranty*



Quick setup

Supplied fully assembled with minimal packaging



Configuration options



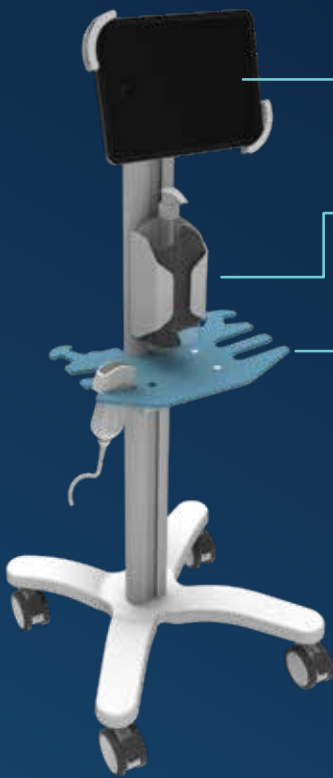
Quick release head



Tablet mount
9 to 11" Tablets



Vesa mount

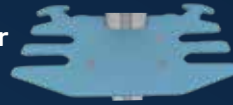


□ Tablet Mount 9 to 11" Tablets



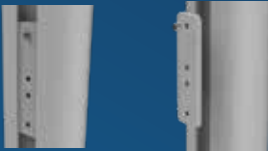
□ Gel Holder

□ Ultrasound hand device Holder



Optional Din Rail to allow fitment of accessories

Sliding Mount to adjust the height of your accessories



□ Multi-functional mounting plate

□ Handle and Storage Bin

□ Storage Bin

□ Handle

Cable management



Mounting options



Display Mount 5
DM5



Quick Release Head
QR1

Holder options



Din Rail
DR2, DR3, DR4, DR5, DR6



Scanner holder
SH1, SH2



Gel holder
GH1, GH2, GH3



Mouse holder
MH1



Cable and Tube Hook
CH1



Din Rail Clamp
DRC1, DRC2

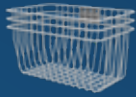


Drip Pole
IV1



Rubber Scanner Holder
SR1, SR2

Storage options



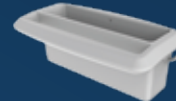
Basket S
ST1



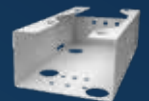
Baskets L
ST2



Storage Bin
ST3



Handle and Storage
ST5



PSU holder
PSH1, PSH2, PSH3,
PSH4, PSH5, PSH6,
PSH7



CPU Mount Small
CPU1



CPU Mount Medium
CPU2



CPU Mount Big
CPU3



Shelves
S1, S2, S3, S4
S5, S6, S7



Achril shelf
AHS1



Mechanical data

Height	1098mm
Wheelbase dimension	616mm (diameter)
Wheel construction	Polyamide with Polyurethane tread
Wheels/locking	2 lockable, 100mm diameter
Loading capacity	20 kg
Angle of tilt	10°

Construction

Main assembly	Aluminum
---------------	----------

Color

RAL 9016	
Custom color	

Certificates

Certificates conforms to	IEC60601-1:2012 (Edition 3)
CE	Rohs compliant

Technical characteristics

- Fully recyclable
- Lifetime Warranty*
- Large range of accessories
- Made in Hungary

