

# Quick Release Mount Cart

MEDICAL  
CART COMPANY

Budgie Range

BUG-6



*Ergonomic*



*Easy to clean*



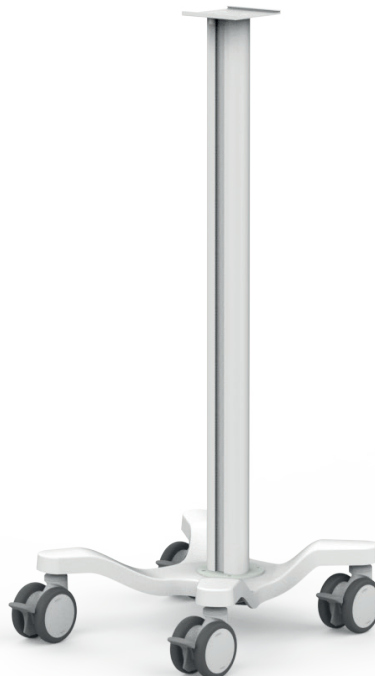
*Multi purpose*



*Lifetime warranty*



*Quick setup*



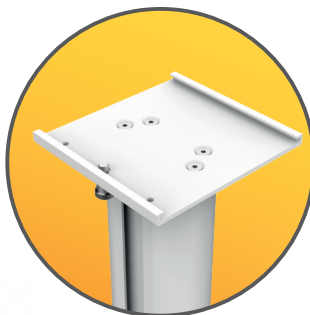
## FEATURES



*Designed and manufactured in Hungary, products are typically 100% recyclable and upgradable in the future. Raw materials are sourced locally or in the EU.*



*Channels to  
fix accessories*



*Quick release mount*



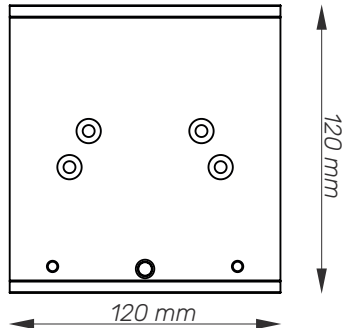
*Lockable wheels*

# Cart Properties

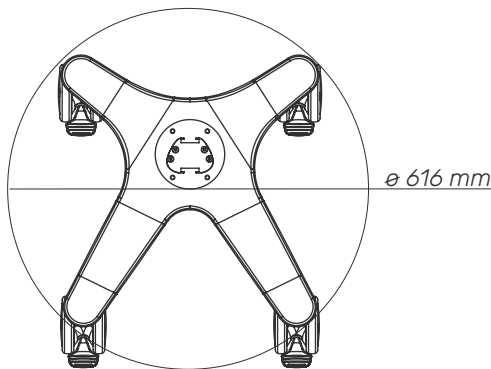
Dimensions and mechanical data



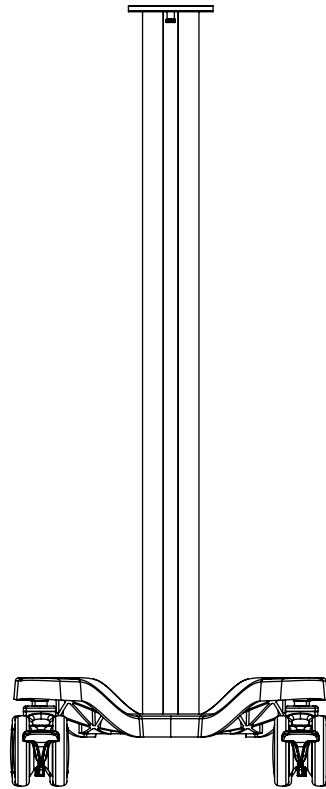
More info  
on website



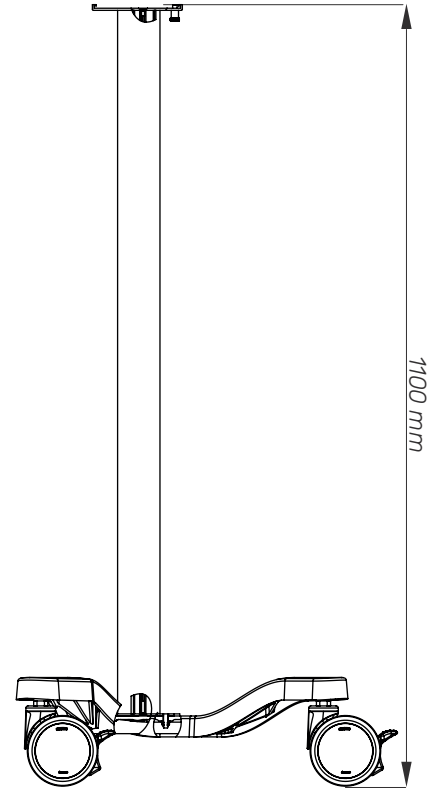
Quick release mount



Base



Front



Side

## Mechanical data

Height	1100 mm
Wheelbase dimension	616 mm (diameter)
Wheel construction	Polyamide with Polyurethane tread
Wheels/locking	2 lockable, 100 mm diameter
Loading capacity	36 kg
Quick release mount size	120x127 mm

## Construction

Main material	Aluminium
---------------	-----------

## Color

RAL 9016	
Custom color	

## Certificates

Certificates conforms to	IEC60601-1:2012 (Edition 3)
CE	Rohs compliant