

ZEBRA CART

SOLUTIONS

2025

Medical Cart
COMPANY



GENERAL FEATURES



EASY TO CLEAN SURFACES

Clean surfaces without dirt traps.
One wipe cleaning.



QUICK SETUP

Available assembled or
flat-packed, easy to assemble.



8 YEARS WARRANTY

Eight-year warranty for
the care-free treatment.



ERGONOMIC

Designed for easy
and comfortable use.



SMALL FOOTPRINT

Developed to fit narrow doors,
ease of movement.



LOCKABLE WHEELS

Simple locking mechanism
operated by foot.



LAPTOP CART

ZEB-3

- 100mm locking wheels
- B3 base - 35kg max loading capacity
- C5H height adjustable column
- Lockable worktop
- KB2 keyboard tray



Datasheet
Scan the QR



DISPLAY CART

ZEB-4

- 125mm locking wheels
- B8 base - 65kg max loading capacity
- Electric column
- Aluminium worktop
- DIN rail sides
- KB2 keyboard tray
- Pharmacy drawers
- Isolation transformer holder



Datasheet
Scan the QR



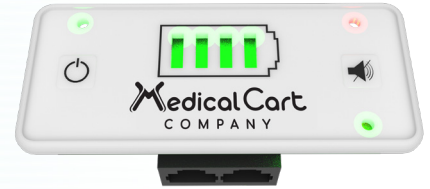
DISPLAY CART

ZEB-4



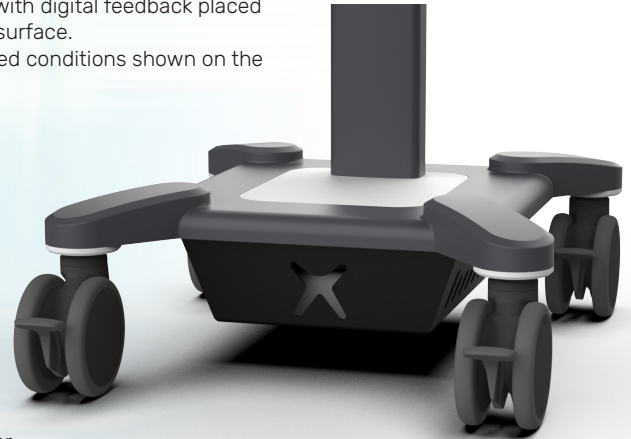
HOLDER FOR ISOLATION TRANSFORMER AND POWER PACK

- Isolation transformer holder: 230x300x100mm inner dimensions.
- Power pack with digital feedback placed on the work surface.
- Service related conditions shown on the display.



ACCESSORY MOUNTING

- Multiple pharmacy drawer mounting option under the worktop.



ALL-ROUND HANDLE

- Comfortable handle frame around the worktop.
- Sides function as DIN rails.
- Front and back have ergonomic grip.



DISPLAY MOUNT

- VESA head.
- Tilt/rotate/height adjustment.



KB2 KEYBOARD TRAY

- Left/right hand mouse tray.
- One rail central mounting.
- Ergonomic armrest.

WORKTOP STORAGE

- The back cover can be removed.
- Large storage area for PSU, cabling, and other small accessories.

LAPTOP CART

ZEB-3

HANDLE CUTS

- Ergonomic cuts for the ease of movement

HEIGHT ADJUSTMENT

- The cart can be ordered with Bowden operated gas spring or electric lift column.
- Height adjustment handle on the side

ALUMINIUM WORKTOP

- 8 mm thick aluminium plate
- Folded sides make a smooth surface

OPTIONAL DIN RAIL

- DIN rail mounting holes on the sides



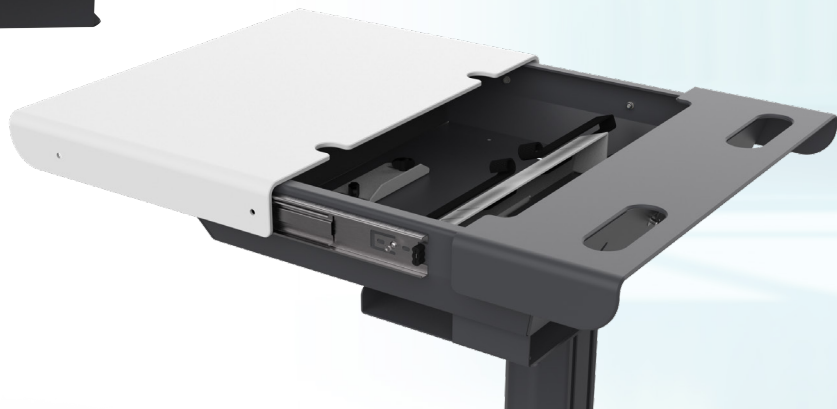
KB2 KEYBOARD TRAY

- Left/right hand mouse tray.
- One rail central mounting.
- Ergonomic armrest.



WORKTOP STORAGE

- The lockable front surface can be slid forwards. The laptop then can be set up.
- Large storage area for PSU, cabling, and other small accessories.





Medical Cart C O M P A N Y



Medical Cart Company Kft.

2051 Hungary

Biatorbágy, Budai út 16.

Phone: +36 23 920 790

Email: info@medicalcartcompany.hu

www.medicalcartcompany.hu