

# ULTRASOUND CART SOLUTIONS 2025

**Medical Cart**  
COMPANY



## GENERAL FEATURES



### **EASY TO CLEAN SURFACES**

Clean surfaces without dirt traps.  
One wipe cleaning.



### **QUICK SETUP**

Available assembled or  
flat-packed, easy to assemble.



### **8 YEARS WARRANTY**

Eight-year warranty for  
the care-free treatment.



### **ERGONOMIC**

Designed for easy  
and comfortable use.



### **SMALL FOOTPRINT**

Developed to fit narrow doors,  
ease of movement.



### **LOCKABLE WHEELS**

Simple locking mechanism  
operated by foot.



# OUR CORE PRODUCTS

## CHA4-WS12

### BASIC HEIGHT ADJUSTABLE CART

- Height adjustment with gas spring
- Large acryl worktop with handle and holder cuts for Gel bottle and Ultrasonic device
- Display mounting option
- Mounting options on the outer column

**Datasheet**  
Scan the QR

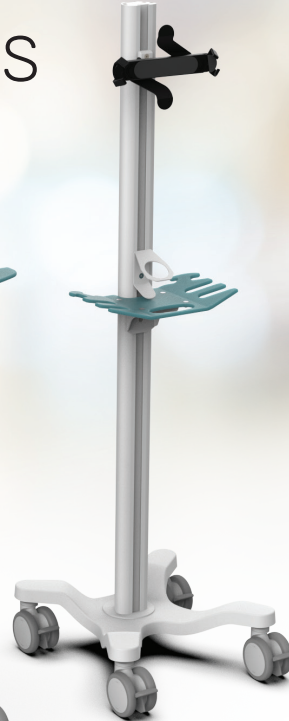


## BUG-USO

### BASIC STATIC CART

- Tablet or Display mount
- Small acryl worktop with handle and holder cuts for Ultrasonic device
- Mounting options all along the column channel

**Datasheet**  
Scan the QR



## 3-0050

Lightweight cart with Tablet mount and small acryl worktop.



Datasheet



Scan the QR

## 3-0072

Height adjustable cart with acryl worktop and Display mounting option.



Datasheet



Scan the QR

## 3-0240

Height adjustable cart with aluminium worktop and accessories.



Datasheet



Scan the QR

## 3-0225

Lightweight cart with Tablet arm, acrylic worktop, and accessories.



Datasheet



Scan the QR

## 3-0226

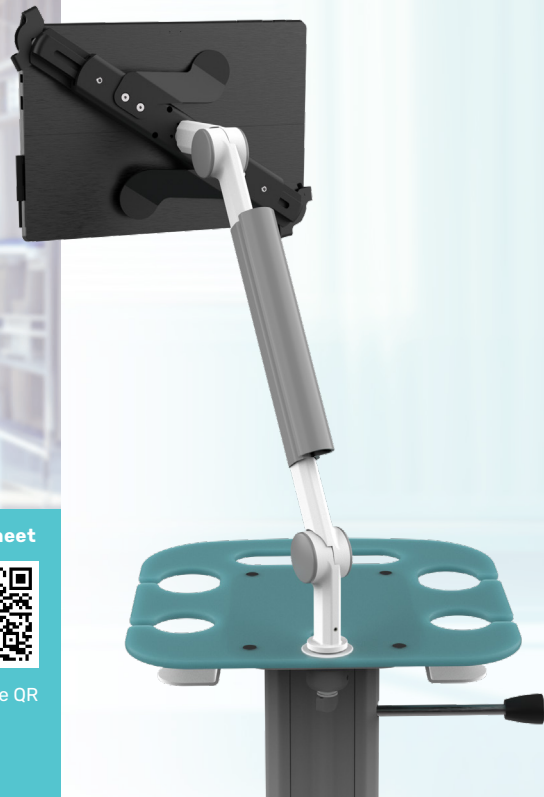
Height adjustable cart with Tablet arm, acrylic worktop, and accessories.



Datasheet



Scan the QR



# WORKTOP OPTIONS

**1-0370**

**Material:**  
Acryl

**Dimensions:**  
W: 570mm  
D: 475mm  
THK: 8mm



**1-1111**

**Material:**  
Acryl

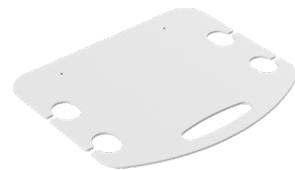
**Dimensions:**  
W: 350mm  
D: 350mm  
THK: 8mm



**2-0277**

**Material:**  
Aluminium

**Dimensions:**  
W: 560mm  
D: 485mm  
THK: 8mm



**WS9**

**Material:**  
Acryl

**Dimensions:**  
W: 620mm  
D: 560mm  
THK: 8mm



**WS12**

**Material:**  
Acryl

**Dimensions:**  
W: 560mm  
D: 485mm  
THK: 8mm



**Custom  
design  
on request**





# ACCESSORIES

## TABLET ARM

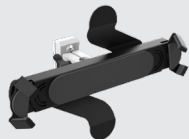


SNA1-WS2-L2B-TM2

**Datasheet**  
Scan the QR



## TABLET MOUNT



TM2, TM2-XL

**Datasheet**  
Scan the QR



## DISPLAY MOUNT



DM2

**Datasheet**  
Scan the QR



## LAPTOP SECURITY



LM2

**Datasheet**  
Scan the QR



## GEL HOLDER

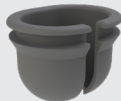


GH1, GH3

**Datasheet**  
Scan the QR



## SCANNER HOLDER



SR1, SR2, SR3

**Datasheet**  
Scan the QR



## PSU HOLDER

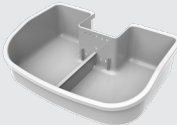


PSH 1/2/7/9

**Datasheet**  
Scan the QR



## STORAGE



ST2, ST3

**Datasheet**  
Scan the QR



## CABLE HOOK

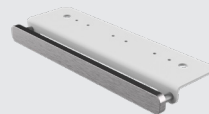


CH1, CH2

**Datasheet**  
Scan the QR



## DIN RAIL



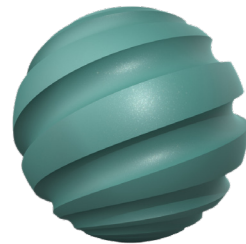
DR1

**Datasheet**  
Scan the QR



# CUSTOM COLORS

We offer the choice of custom colors for the aluminium components from **Tiger 3D metallic range**.



Visit the Tiger webshop and select the color you desire:  
<https://www.tiger-coatings.com>



# Medical Cart

## COMPANY



**Medical Cart Company Kft.**

2051 Hungary

Biatorbágy, Budai út 16.

Phone: +36 23 920 790

Email: [info@medicalcartcompany.hu](mailto:info@medicalcartcompany.hu)

[www.medicalcartcompany.hu](http://www.medicalcartcompany.hu)