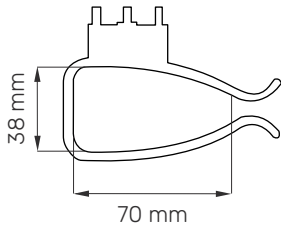


# Scanner Holder options

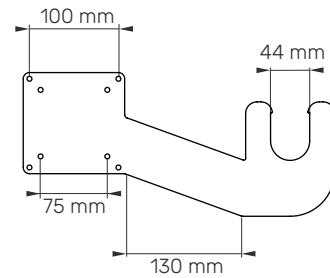
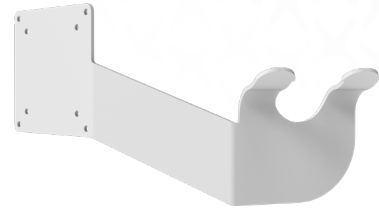
All scanner holders

## SH1



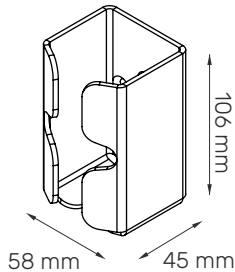
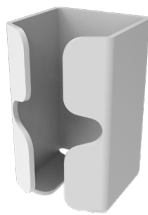
Dimensions: 99x60x38 mm  
Material: Plastic  
**DIN Rail mounted**

## SH2



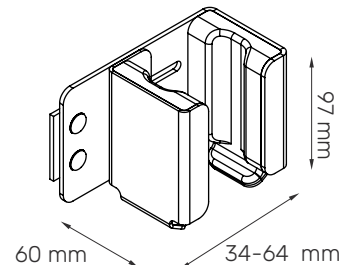
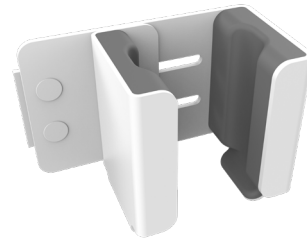
Dimensions: 383x131x102 mm  
Material: Steel (1.5 mm)  
**VESA mounted**

## SH3



Dimensions: 70x148x50 mm  
Material: Aluminium (3 mm)  
**VESA, DIN Rail, Column mounted**

## SH4



Dimensions: 34-64x97x60 mm  
Material: Aluminium (3 mm)  
**VESA, DIN Rail, Column mounted**

# Scanner Holder options

All scanner holders



More info  
on website

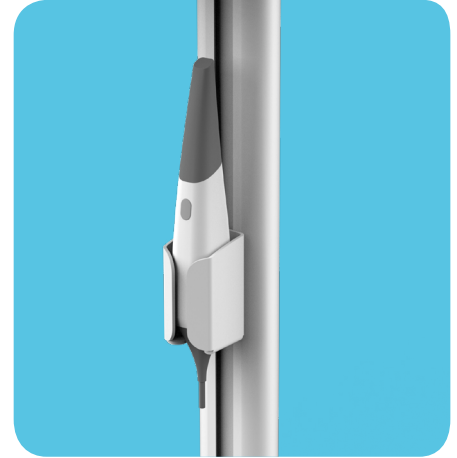
## FIXING



DIN Rail mount



VESA mount



Column mount



### Multi purpose

Suitable for many  
areas of use



### Durable

Lifetime warranty



### Easy to clean

Clean surfaces with  
minimal dirt straps



### Quick setup

Can be installed  
in minutes