

# Power supply holders



## Easy to clean

Clean surfaces with minimal dirt traps



## Durable

Lifetime warranty



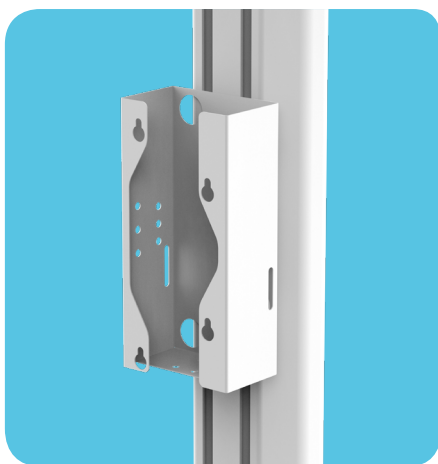
## Quick setup

Supplied fully assembled with minimal packaging

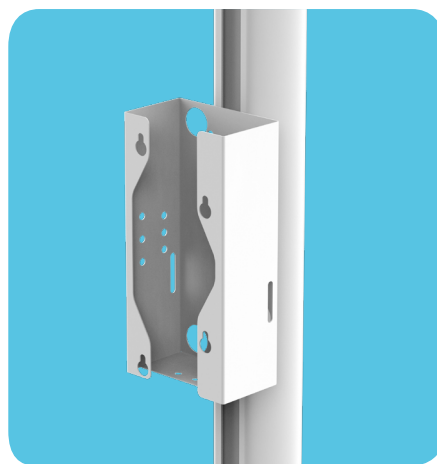


Actual load capacity depends on mounting configuration!

## MOUNTING



C5 column channel



C2 column channels



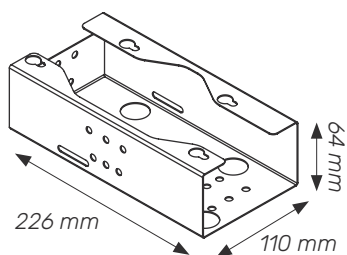
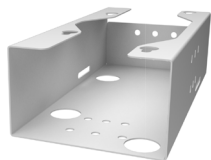
On the back  
of the work surface

# Power supply holders

All holders come in white, RAL 9016.

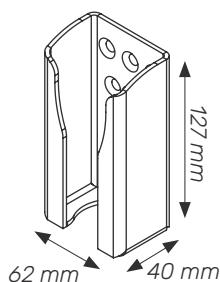
Available in custom colors. Internal dimensions are indicated.

## PSH1



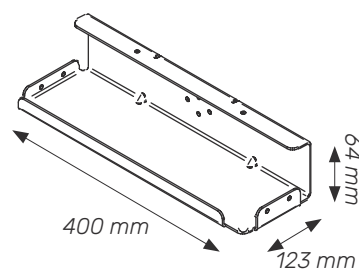
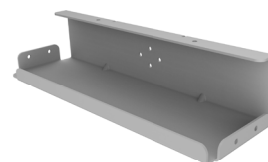
Dimensions: 110x60x275 mm  
Material: Steel (1 mm)  
Max. Load: 3 kg

## PSH2



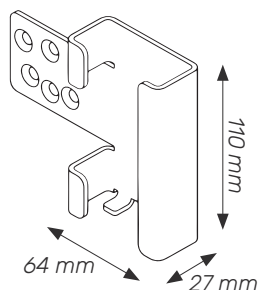
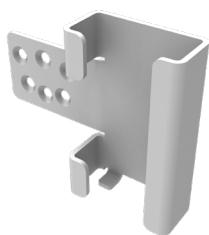
Dimensions: 62x130x40 mm  
Material: Aluminium (3 mm)  
Max. Load: 1.5 kg

## PSH3



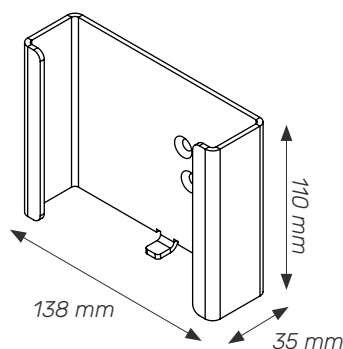
Dimensions: 260x130x112 mm  
Material: Aluminium (3 mm)  
Max. Load: 1 kg

## PSH4



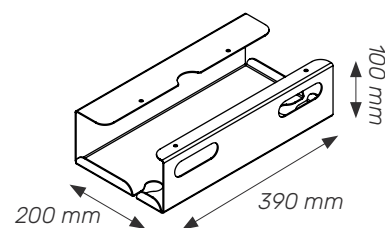
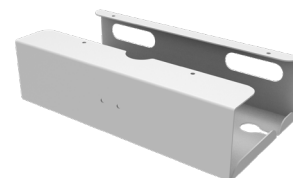
Dimensions: 64x110x27 mm  
Material: Aluminium (3 mm)  
Max. Load: 1.5 kg

## PSH5



Dimensions: 138x110x35 mm  
Material: Aluminium (3 mm)  
Max. Load: 1.5 kg

## PSH6



Dimensions: 390x100x170 mm  
Material: Aluminium (2 mm)  
Max. Load: 1.5 kg

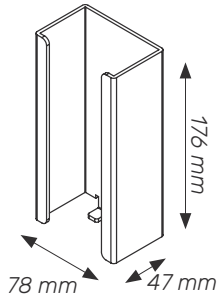
# Power supply holders



All holders come in white, RAL 9016.

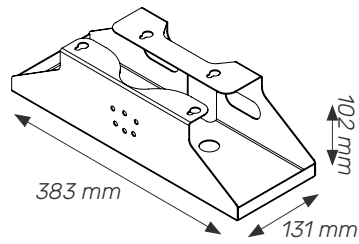
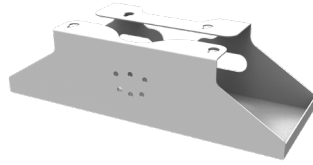
Available in custom colors. Internal dimensions are indicated.

## PSH7



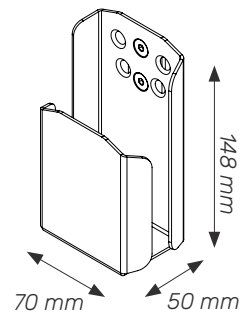
Dimensions: 78x176x47 mm  
Material: Aluminium (3mm)  
Max. Load: 1.5 kg

## PSH8



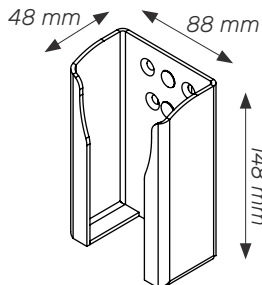
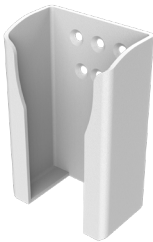
Dimensions: 383x131x102 mm  
Material: Steel (1.5 mm)  
Max. Load: 3 kg

## PSH9



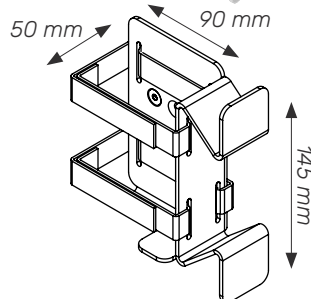
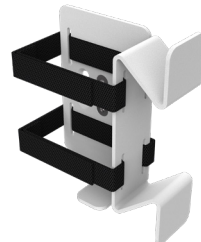
Dimensions: 70x148x50 mm  
Material: Steel (2 mm)  
Max. Load: 1.5 kg

## PSH10



Dimensions: 88x148x48 mm  
Material: Aluminium (3mm)  
Max. Load: 1.5 kg

## PSH11



Dimensions: 90x145x50 mm  
Material: Aluminium (3mm)  
Max. Load: 1.5 kg