

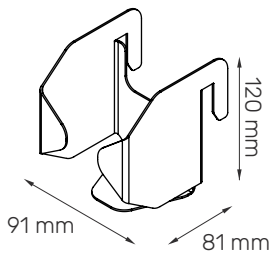
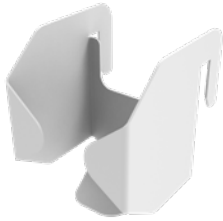
Gel holders

All holders come in white, RAL 9016.
Available in custom colors. Internal dimensions are indicated.

More info
on website

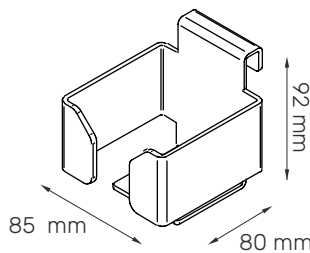
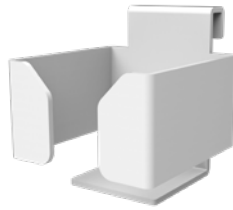


GH1



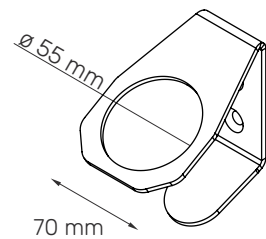
Dimensions: 91x120x81 mm
Material: Steel (1.5 mm)
DIN Rail mounted

GH2



Dimensions: 85x92x80 mm
Material: Steel (3 mm)
VESA mounted

GH3

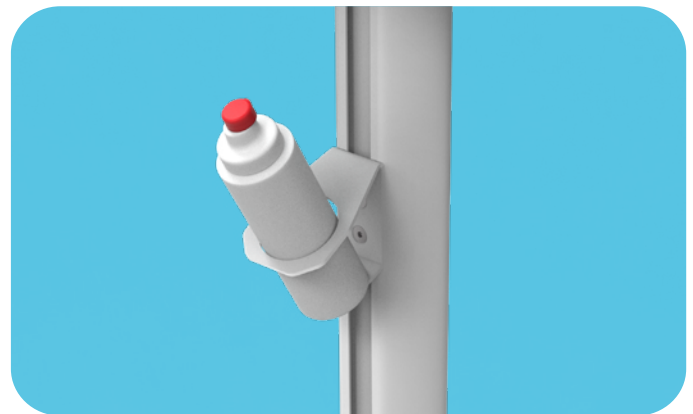


Dimensions: 70x148x50 mm
Material: Aluminium (3 mm)
VESA, DIN Rail, Column mounted

FIXING



DIN Rail mounting



Column mounting



Easy to clean

Clean surfaces with
minimal dirt traps



Durable

Lifetime warranty



Quick setup

Can be added
to the cart easily