

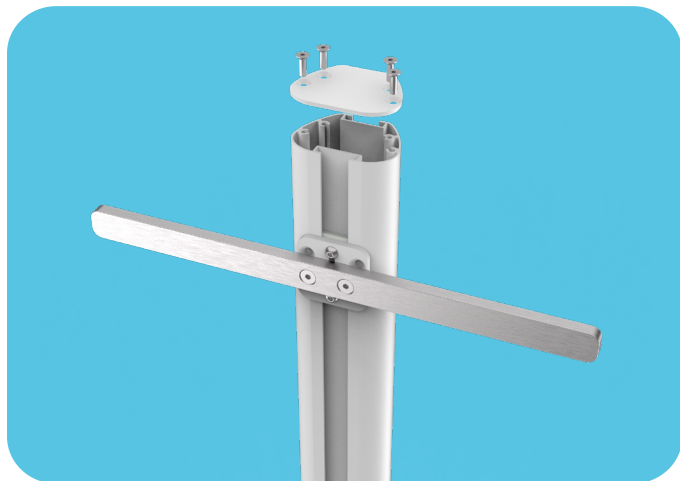
DIN Rail options

All DIN rails are made of aluminium.

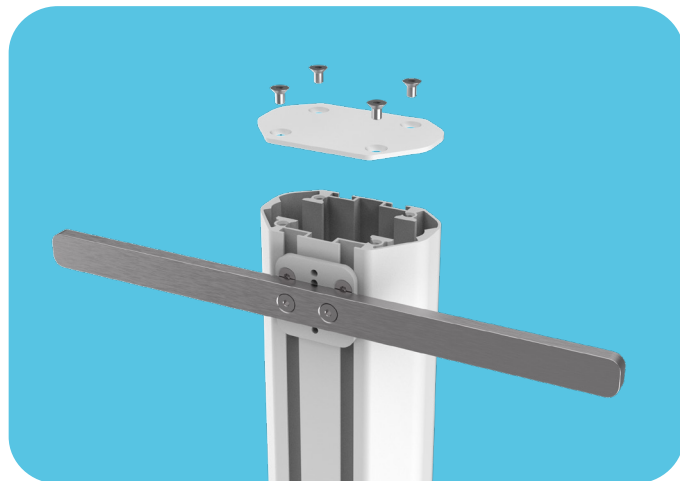
More info
on website:



MOUNTING ON COLUMN

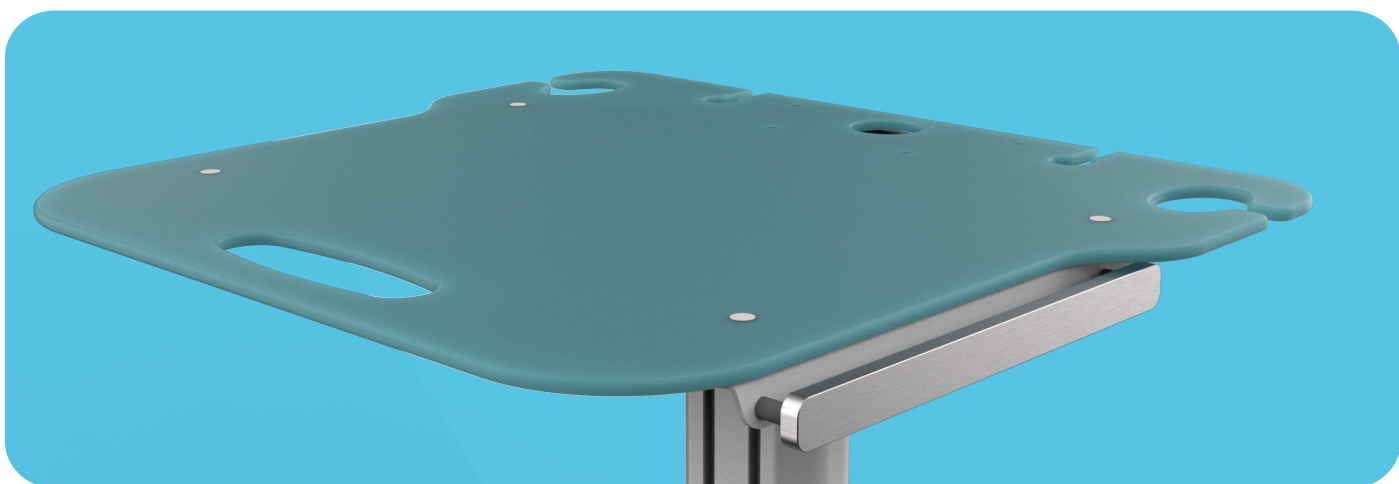


On C2 column channel.



On C5 column channel.

MOUNTING ON WORKSURFACE



Can be attached on the side of the work surface.



Multi purpose

Suitable for many areas of use



Durable

Lifetime warranty



Easy to clean

Clean surfaces with one-wipe cleaning



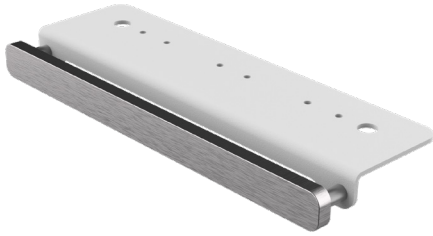
Quick setup

Can be installed in minutes

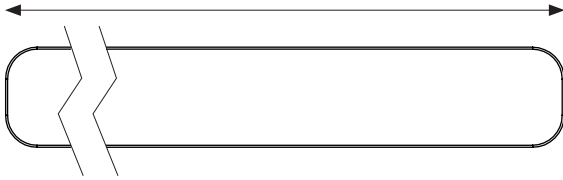
DIN Rail options

All DIN Rails are made of aluminium (brushed).

DR1

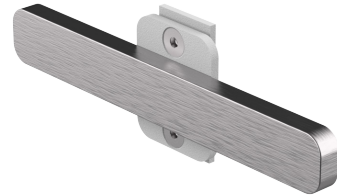


300mm

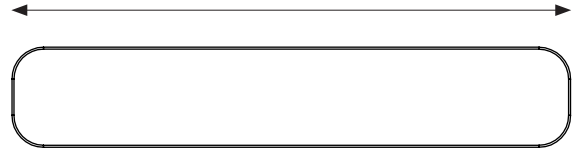


Dimensions: 300x25x10mm
Material: Brushed aluminium

DR2



182mm

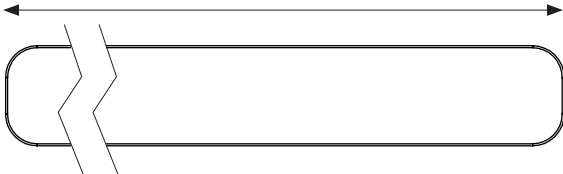


Dimensions: 182x25x10mm
Material: Brushed aluminium

DR3



400mm

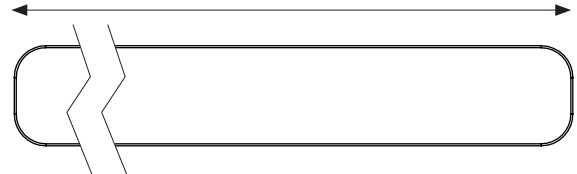


Dimensions: 400x25x10mm
Material: Brushed aluminium

DR4



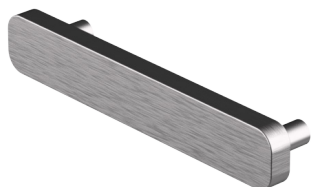
500mm



Dimensions: 500x25x10mm
Material: Brushed aluminium

DIN Rail options

DR5

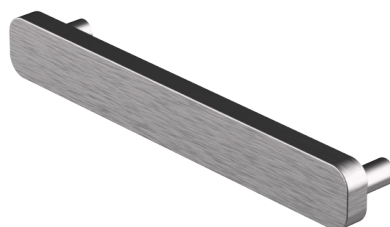


150mm



Dimensions: 150x25x10mm
Material: Brushed aluminium

DR6

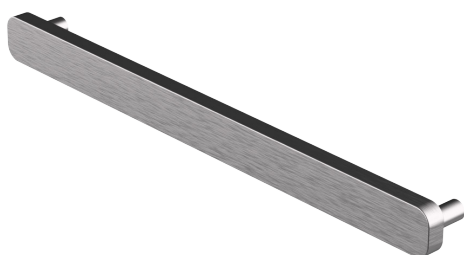


182mm

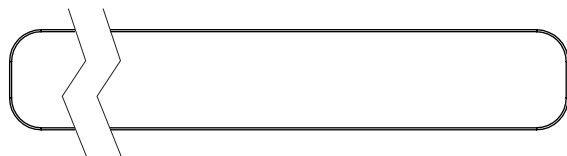


Dimensions: 182x25x10mm
Material: Brushed aluminium

DR7

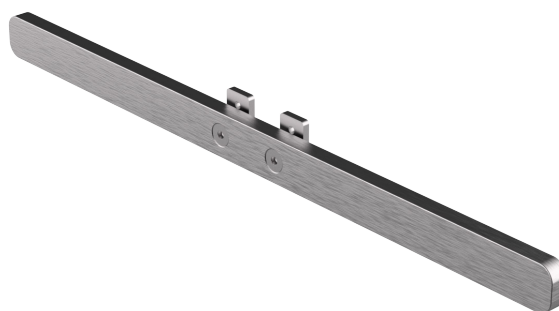


300mm

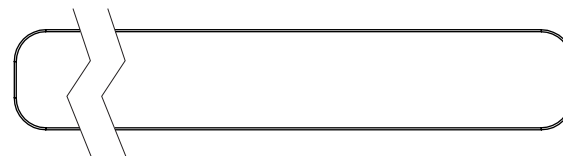


Dimensions: 300x25x10mm
Material: Brushed aluminium

DR8



400mm



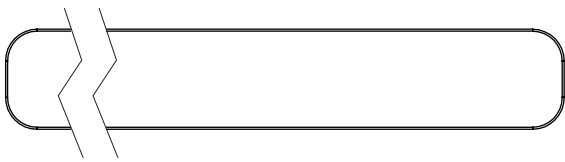
Dimensions: 400x25x10mm
Material: Brushed aluminium

DIN Rail options

DR9



600mm



Dimensions: 600x25x10mm
Material: Brushed aluminium