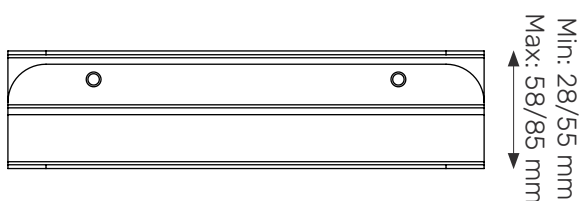
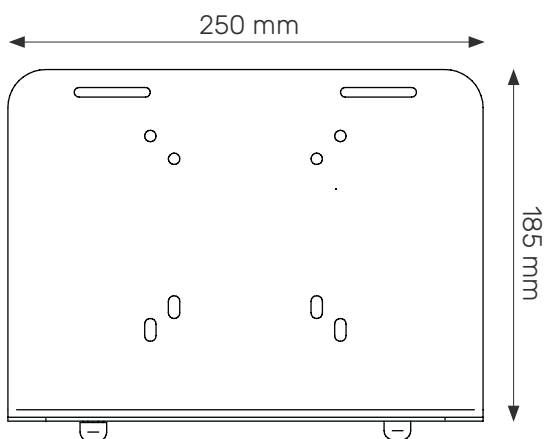
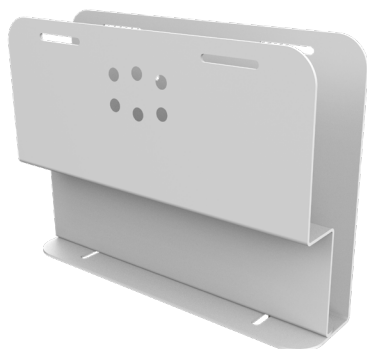


# Computer holders

All holders come in white, RAL 9016.

Available in custom colors. Internal dimensions are indicated.

## CPU1



Dimensions: 250x185x28/55, 58/85 mm

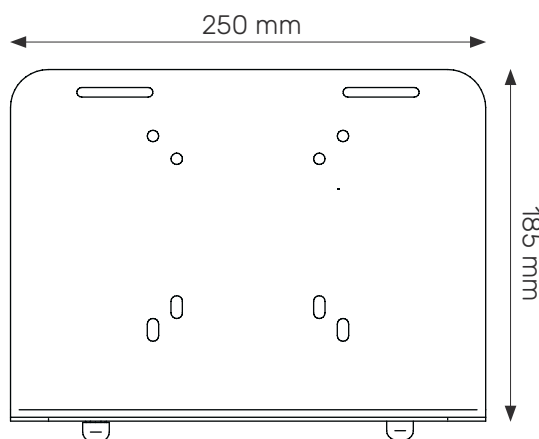
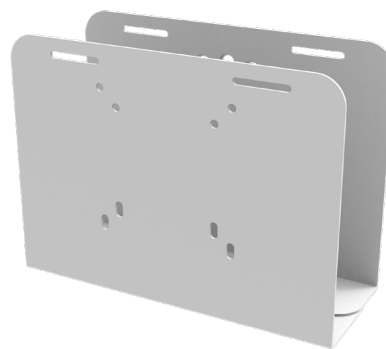
Material: Steel (2 mm)

Max. Load: 4 kg

Datasheet:



## CPU2



Dimensions: 250x221x47/97 mm

Material: Steel (2 mm)

Max. Load: 4kg

Datasheet:



# Computer holders

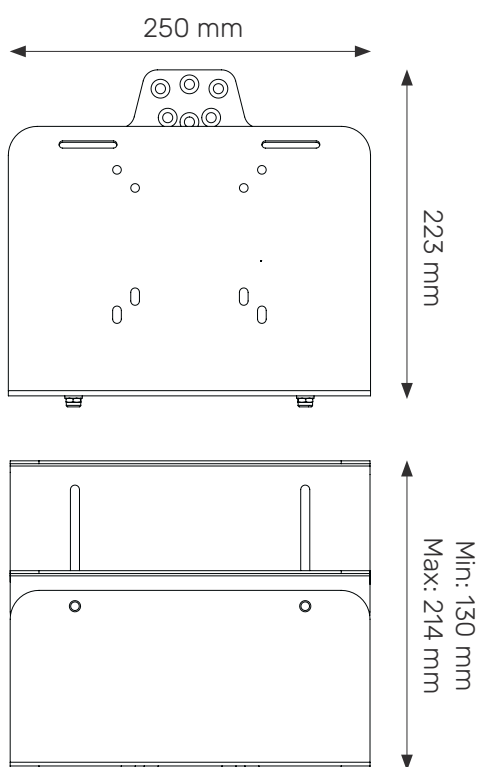
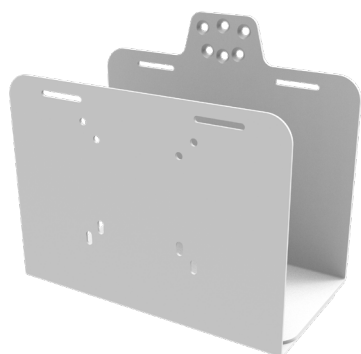


More info  
on website

All holders come in white, RAL 9016.

Available in custom colors. Internal dimensions are indicated.

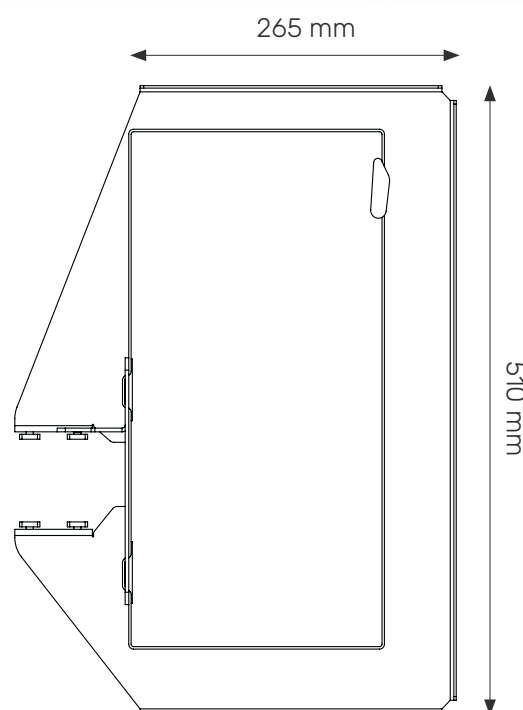
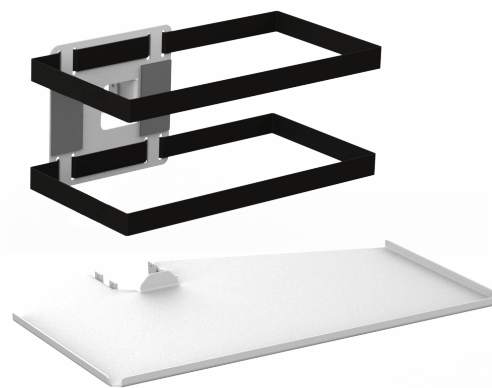
## CPU3



Dimensions: 250x221x130/214 mm  
Material: Steel (3 mm)  
Max. Load: 5kg  
Datasheet:



## CPU4



Dimensions: 265x510 mm  
Material: Steel (2 mm)  
Max. Load: 3 kg  
Datasheet:



# Computer holders

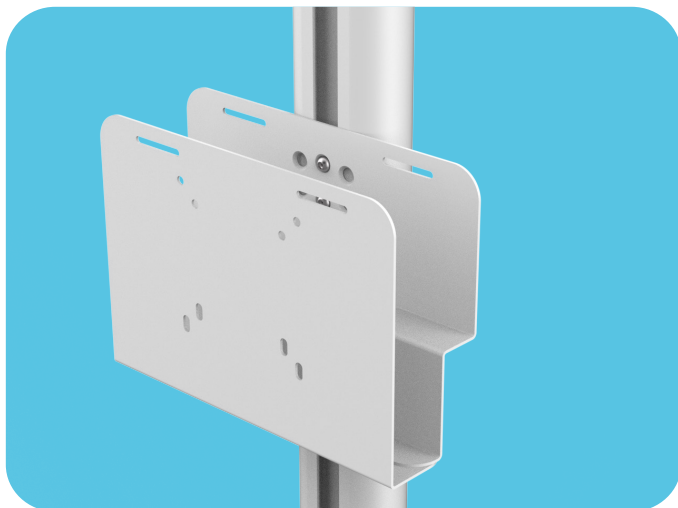
All holders come in white, RAL 9016.

Available in custom colors. Internal dimensions are indicated.

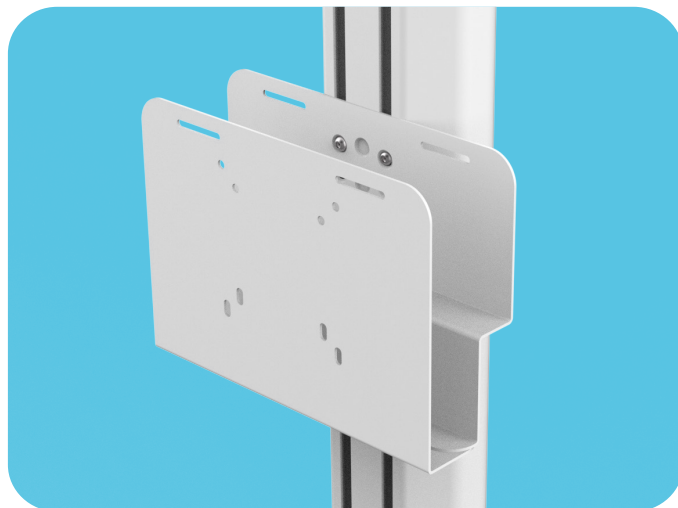


More info  
on website

## FIXING

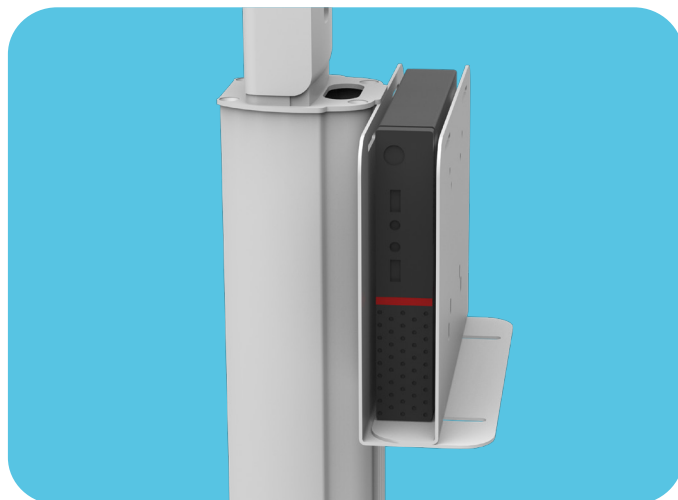
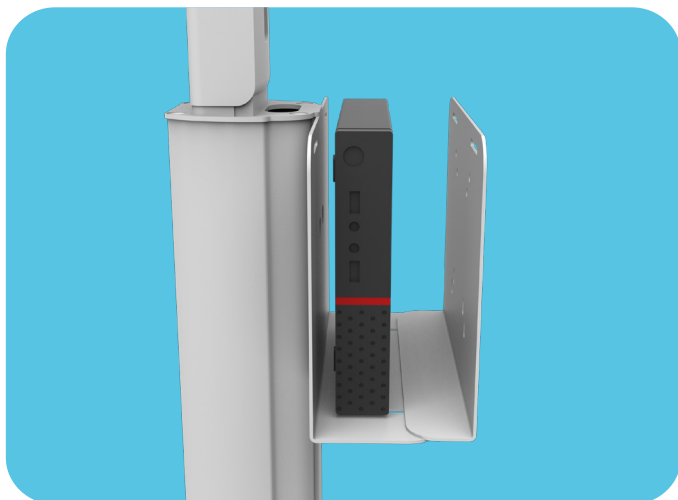


Easily mount in C2 column's column channel



Easily fix in C5 column's column channels

## HIGH LEVEL OF ADJUSTABILITY



Every model can be adjusted to the desired size. You can place your power supply in the holder as well. CPU4 is only for desktop computers.



### Durable

Lifetime warranty



### Quick setup

Can be added to the cart quickly and easily



### Easy to clean

Clean surfaces with minimal dirt traps



### Ergonomic

Easy to install every computer on it