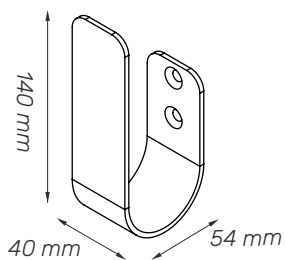


Cable holders

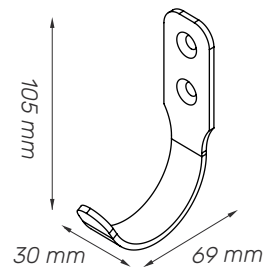
All holders come in white, RAL 9016.
Available in custom colors. Internal dimensions are indicated.

CH1



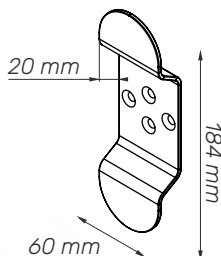
Dimensions: 40x140x54 mm
Material: Aluminium (3 mm)

CH2



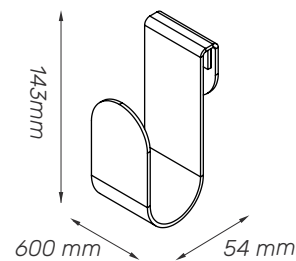
Dimensions: 40x140x54 mm
Material: Steel (3 mm)

CH3



Dimensions: 70x148x50 mm
Material: Aluminium (3 mm)

CH4



Dimensions: 40x140x54 mm
Material: Steel (3 mm)
Fixing on 10x25 mm DIN Rails

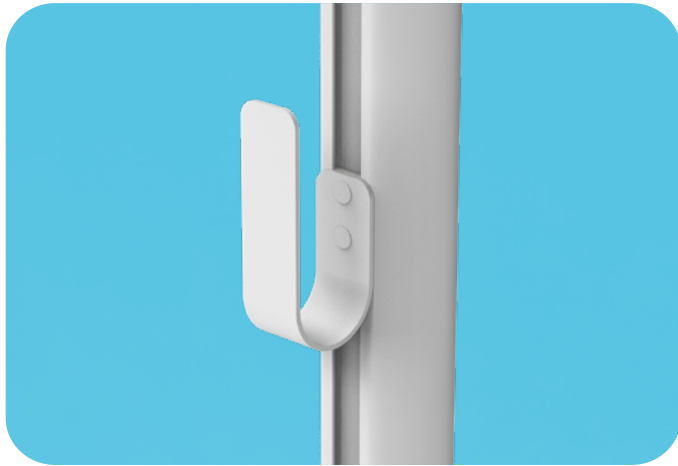
Cable holders

More info
on website

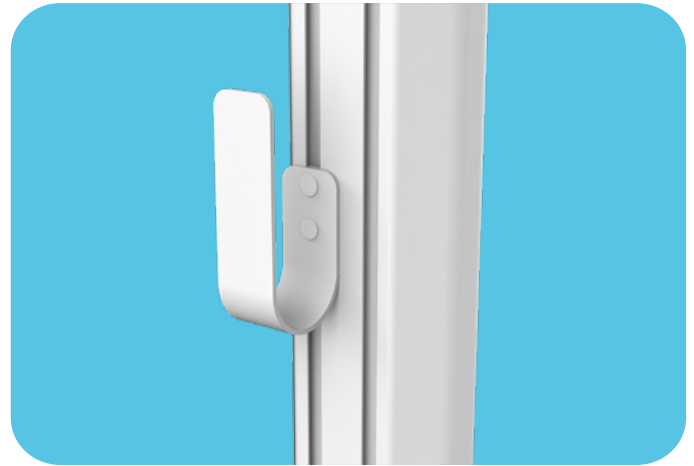


All holders come in white, RAL 9016.
Available in custom colors. Internal dimensions are indicated.

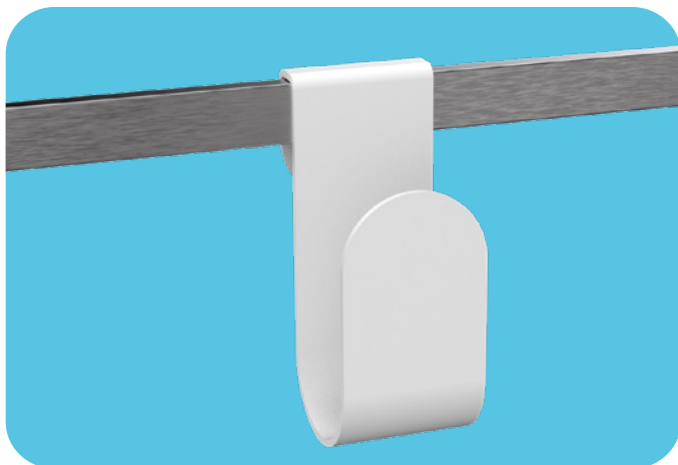
FIXING



C2 column mounting



C5 column mounting



DIN Rail mounting



Easy to clean

*Clean surfaces with
minimal dirt traps*



Durable

Lifetime warranty



Quick setup

*Can be added
to the cart easily*